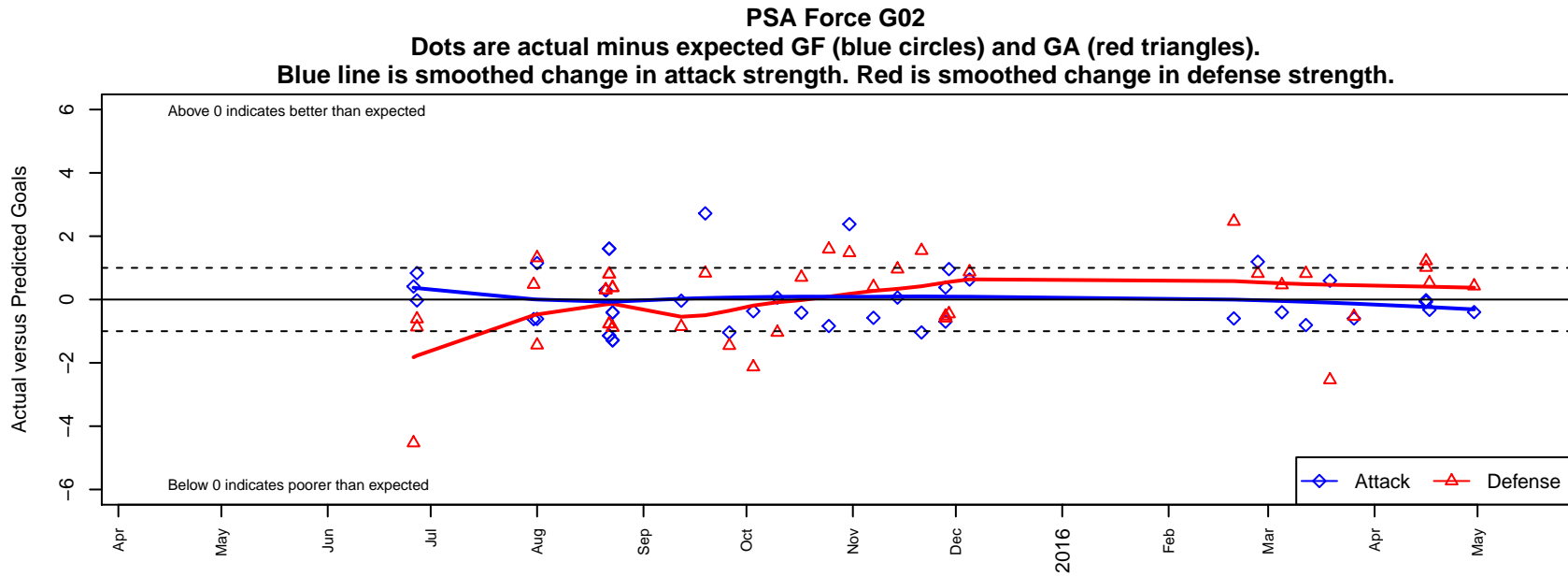


PSA Force G02

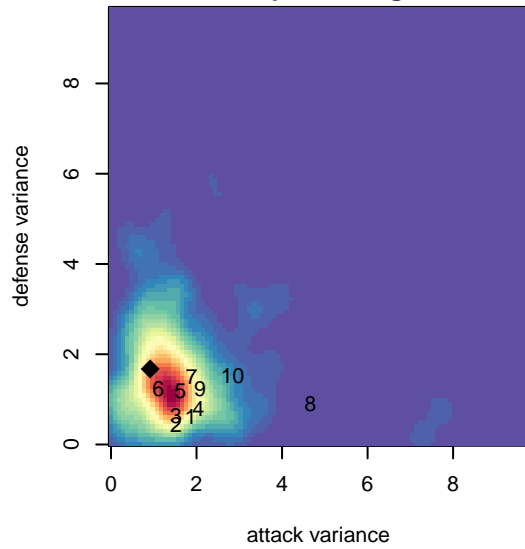
Pilchuck Soccer Alliance
 Marysville, WA
 G02 total strength=759
 attack=0.83 defense=0.91
 fall league = NPSL Div 2 U13
 spr league = Spr NPSL Div 1 U13
 notes= Marysville Force; Willsie
 2015

alt names used:
 126 PSA Force U13 G
 G02 Force_Willsie
 PSA Force U13
 PSA G02 Force – Willsie
 PSA G02 Force – Willsie
 PSA G02 FORCE_WILLSIE (TBA)

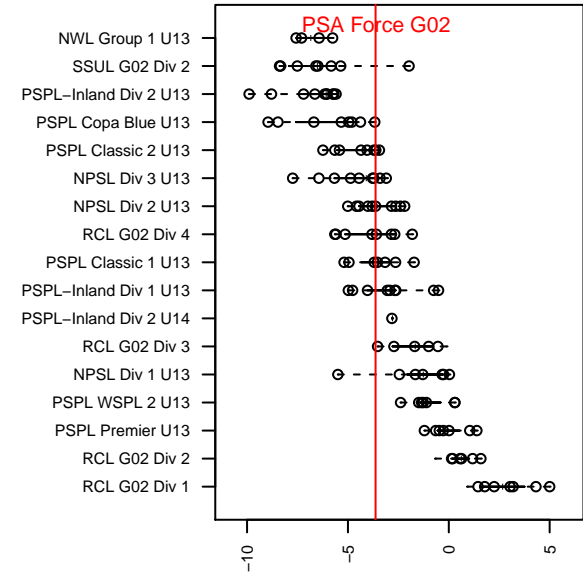
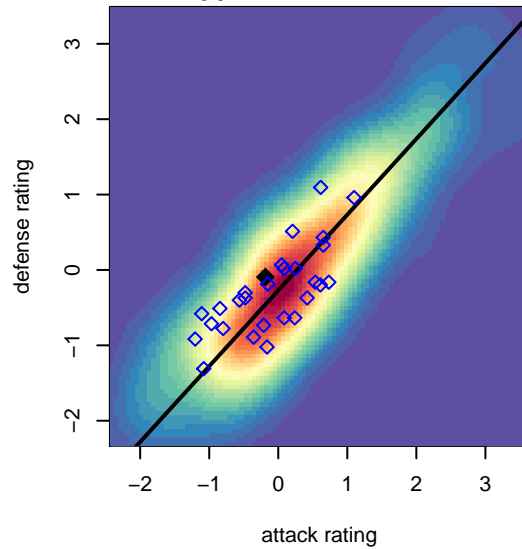
Venues played:
 2015 Baker Blast COPA U13
 2015 Strawberry Classic GU13
 2015 Summer Slam Silver/Bronze U13
 2015 NPSL Division 2 U13
 2015 Cranberry Cup U12-13
 2015 Spr NPSL Division 1 U13
 2015 WA Cup GU13 Bronze U13



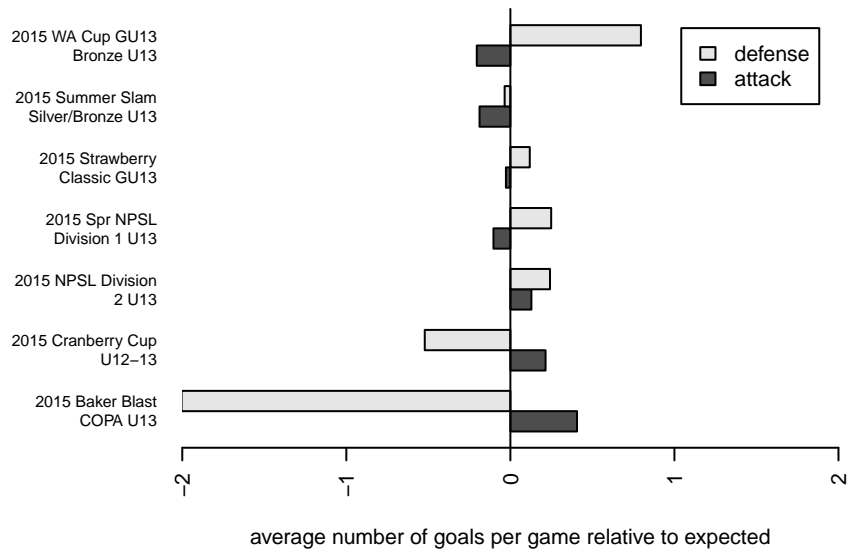
**attack and defense variance (black dot)
relative to other teams
and top 10 in region**



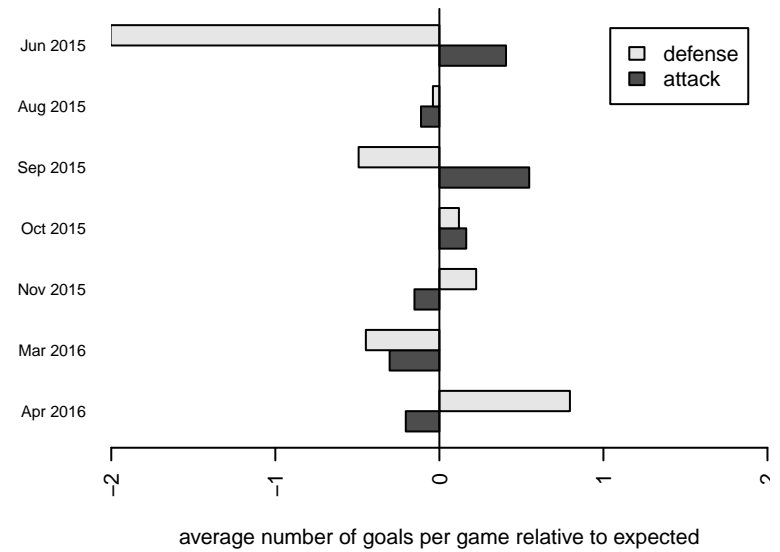
**attack and defense rating
relative to others at age
and all opponents in last 13 months**



Performance relative to 13 month average



Performance relative to 13 month average



| date | home | | away | | venue | pred.home | pred.away |
|------------|------------------------------|---|-------------------------------|---|------------------------------------|-----------|-----------|
| 2016-04-30 | Spokane Scotties Klein G02 | 2 | PSA Force G02 | 0 | 2015 WA Cup GU13 Bronze U13 | 2.42 | 0.40 |
| 2016-04-17 | TC United White G02 | 0 | PSA Force G02 | 1 | 2015 WA Cup GU13 Bronze U13 | 0.52 | 1.33 |
| 2016-04-16 | PSA Force G02 | 1 | ISC Gunners B G02 | 0 | 2015 WA Cup GU13 Bronze U13 | 1.02 | 1.22 |
| 2016-04-16 | RSA Elite Thompson G02 | 0 | PSA Force G02 | 1 | 2015 WA Cup GU13 Bronze U13 | 1.01 | 1.07 |
| 2016-03-26 | Crossfire Select Miller G02 | 3 | PSA Force G02 | 0 | 2015 Spr NPSL Division 1 U13 | 2.47 | 0.60 |
| 2016-03-19 | PSA Force G02 | 1 | Kent United Green G02 | 6 | 2015 Spr NPSL Division 1 U13 | 0.40 | 3.46 |
| 2016-03-12 | PSA Force G02 | 1 | Mukilteo Rush G02 | 0 | 2015 Spr NPSL Division 1 U13 | 1.81 | 0.82 |
| 2016-03-05 | Kent United Green G02 | 3 | PSA Force G02 | 0 | 2015 Spr NPSL Division 1 U13 | 3.46 | 0.40 |
| 2016-02-27 | Mukilteo Rush G02 | 0 | PSA Force G02 | 3 | 2015 Spr NPSL Division 1 U13 | 0.82 | 1.81 |
| 2016-02-20 | PSA Force G02 | 0 | Crossfire Select Miller G02 | 0 | 2015 Spr NPSL Division 1 U13 | 0.60 | 2.47 |
| 2015-12-05 | Crossfire Select McCool G02 | 0 | PSA Force G02 | 2 | 2015 NPSL Division 2 U13 | 0.87 | 1.37 |
| 2015-11-29 | NSC Vipers G02 | 3 | PSA Force G02 | 2 | 2015 Cranberry Cup U12-13 | 2.55 | 1.04 |
| 2015-11-28 | PSA Force G02 | 1 | XUnk United Thunder Birds G03 | 1 | 2015 Cranberry Cup U12-13 | 1.70 | 0.41 |
| 2015-11-28 | NSC Thunder G02 | 2 | PSA Force G02 | 1 | 2015 Cranberry Cup U12-13 | 1.48 | 0.62 |
| 2015-11-21 | PSA Force G02 | 0 | NSC Vipers G02 | 1 | 2015 NPSL Division 2 U13 | 1.04 | 2.55 |
| 2015-11-14 | PSA Force G02 | 2 | Whatcom FC Rangers White G02 | 0 | 2015 NPSL Division 2 U13 | 1.94 | 0.96 |
| 2015-11-07 | Kent United White G02 | 1 | PSA Force G02 | 1 | 2015 NPSL Division 2 U13 | 1.40 | 1.58 |
| 2015-10-31 | PSA Force G02 | 3 | NSC Thunder G02 | 0 | 2015 NPSL Division 2 U13 | 0.62 | 1.48 |
| 2015-10-25 | Lake Hills Supreme G02 | 0 | PSA Force G02 | 0 | 2015 NPSL Division 2 U13 | 1.59 | 0.84 |
| 2015-10-17 | PSA Force G02 | 1 | Seattle United S Blue G02 | 1 | 2015 NPSL Division 2 U13 | 1.42 | 1.70 |
| 2015-10-10 | Whatcom FC Rangers White G02 | 2 | PSA Force G02 | 2 | 2015 NPSL Division 2 U13 | 0.96 | 1.94 |
| 2015-10-03 | PSA Force G02 | 1 | Crossfire Select McCool G02 | 3 | 2015 NPSL Division 2 U13 | 1.37 | 0.87 |
| 2015-09-26 | NSC Vipers G02 | 4 | PSA Force G02 | 0 | 2015 NPSL Division 2 U13 | 2.55 | 1.04 |
| 2015-09-19 | PSA Force G02 | 5 | Newport FC Fusion G02 | 0 | 2015 NPSL Division 2 U13 | 2.28 | 0.83 |
| 2015-09-12 | MIFC Fusion G02 | 3 | PSA Force G02 | 1 | 2015 NPSL Division 2 U13 | 2.15 | 1.04 |
| 2015-08-23 | PSA Force G02 | 3 | ISC Gunners Rec Ghana G02 | 0 | 2015 Summer Slam Silver/Bronze U13 | 3.41 | 0.37 |
| 2015-08-23 | MRFC Blue G03 | 2 | PSA Force G02 | 1 | 2015 Summer Slam Silver/Bronze U13 | 1.12 | 2.29 |
| 2015-08-23 | PSA Force G02 | 3 | ISC Gunners Rec Ghana G02 | 0 | 2015 Summer Slam Silver/Bronze U13 | 3.41 | 0.37 |

| date | home | | away | | venue | pred.home | pred.away |
|-------------|----------------------------------|---|------------------------------|---|------------------------------------|------------------|------------------|
| 2015-08-23 | MRFC Blue G03 | 2 | PSA Force G02 | 1 | 2015 Summer Slam Silver/Bronze U13 | 1.12 | 2.29 |
| 2015-08-22 | PSA Force G02 | 0 | PS Slammers Black G02 | 3 | 2015 Summer Slam Silver/Bronze U13 | 1.14 | 2.23 |
| 2015-08-22 | PSA Force G02 | 3 | Crossfire Select Tacey G03 | 0 | 2015 Summer Slam Silver/Bronze U13 | 1.39 | 0.80 |
| 2015-08-22 | PSA Force G02 | 0 | PS Slammers Black G02 | 3 | 2015 Summer Slam Silver/Bronze U13 | 1.14 | 2.23 |
| 2015-08-22 | PSA Force G02 | 3 | Crossfire Select Tacey G03 | 0 | 2015 Summer Slam Silver/Bronze U13 | 1.39 | 0.80 |
| 2015-08-21 | FC Salmon Creek Nemesis Blue G02 | 1 | PSA Force G02 | 1 | 2015 Summer Slam Silver/Bronze U13 | 1.30 | 0.71 |
| 2015-08-21 | FC Salmon Creek Nemesis Blue G02 | 1 | PSA Force G02 | 1 | 2015 Summer Slam Silver/Bronze U13 | 1.30 | 0.71 |
| 2015-08-01 | PSA Force G02 | 1 | Snohomish United Red G02 | 2 | 2015 Strawberry Classic GU13 | 1.61 | 0.56 |
| 2015-08-01 | PSA Force G02 | 2 | WA Rush Nero G02 | 0 | 2015 Strawberry Classic GU13 | 0.85 | 1.32 |
| 2015-07-31 | NSC Thunder G02 | 1 | PSA Force G02 | 0 | 2015 Strawberry Classic GU13 | 1.48 | 0.62 |
| 2015-06-27 | PSA Force G02 | 3 | Richmond FC Red Devils 2003G | 1 | 2015 Baker Blast COPA U13 | 2.17 | 0.39 |
| 2015-06-27 | PSA Force G02 | 1 | Chilliwack FC Selects 2003G | 3 | 2015 Baker Blast COPA U13 | 1.03 | 2.13 |
| 2015-06-26 | Whatcom FC Rangers Blue G02 | 7 | PSA Force G02 | 1 | 2015 Baker Blast COPA U13 | 2.47 | 0.59 |